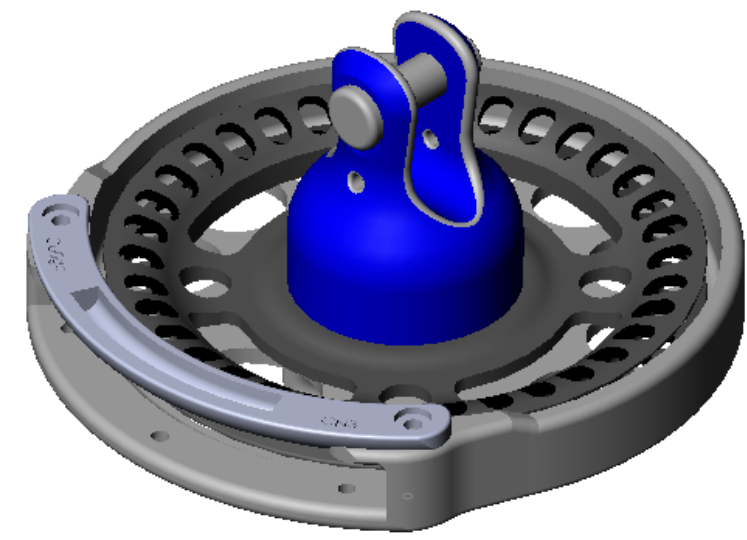
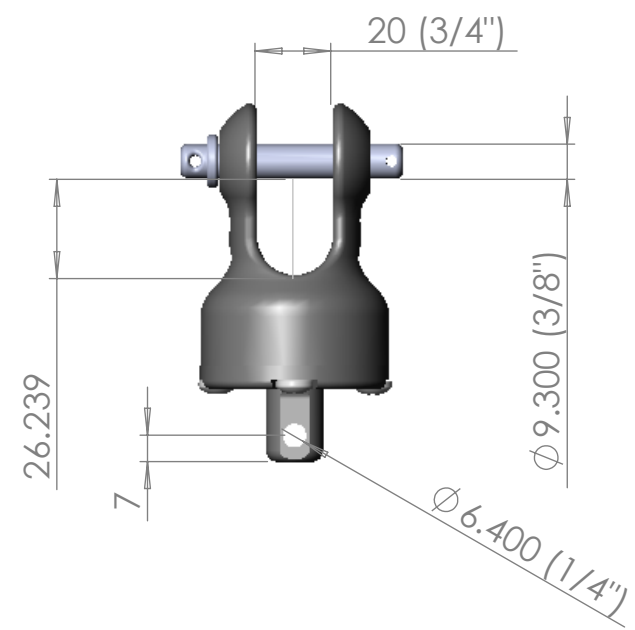
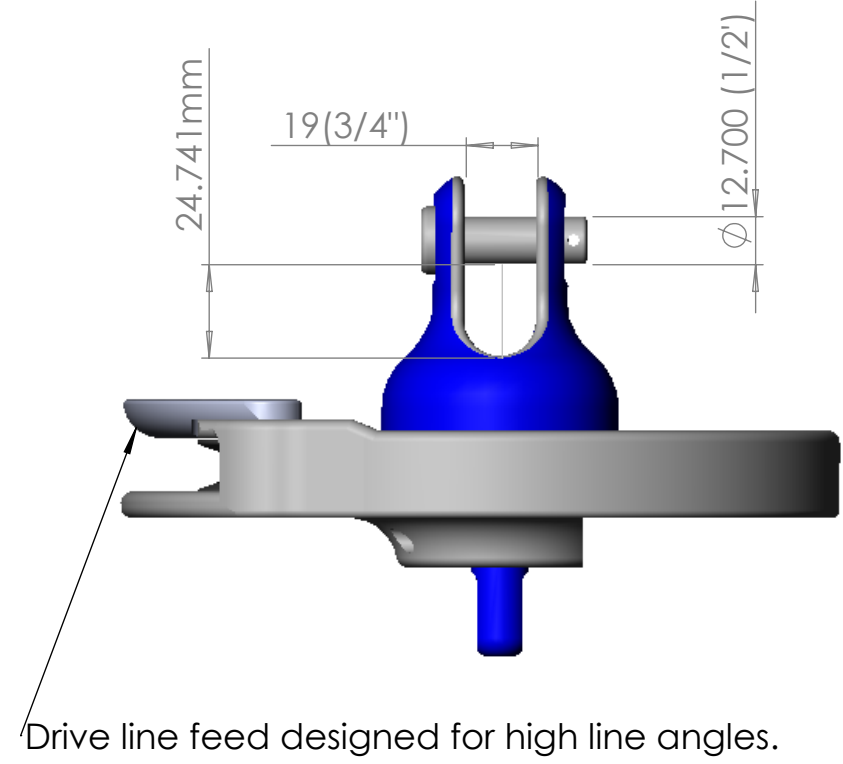
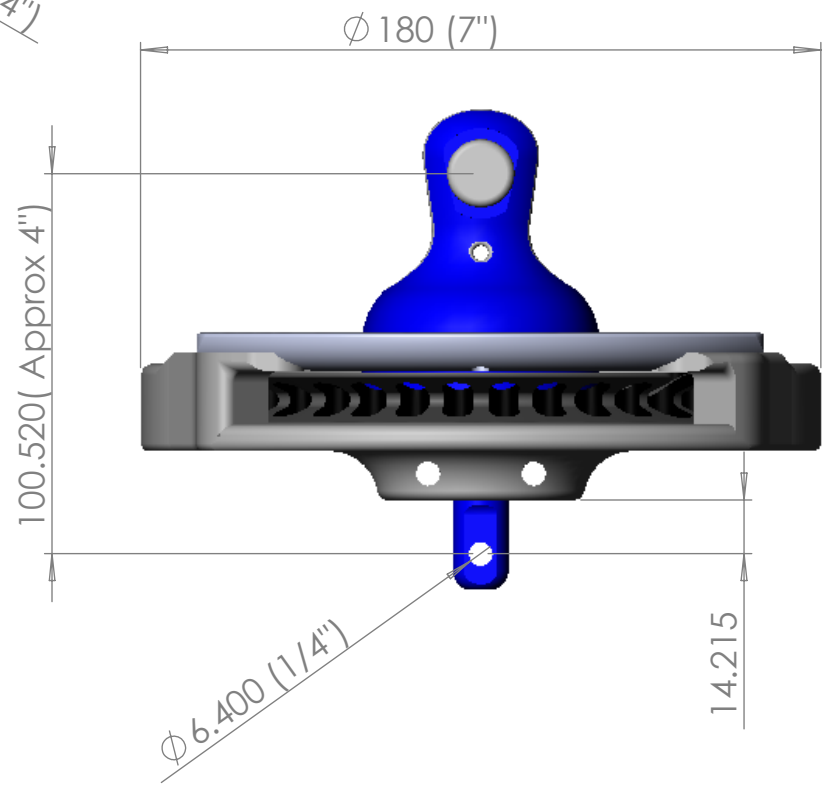


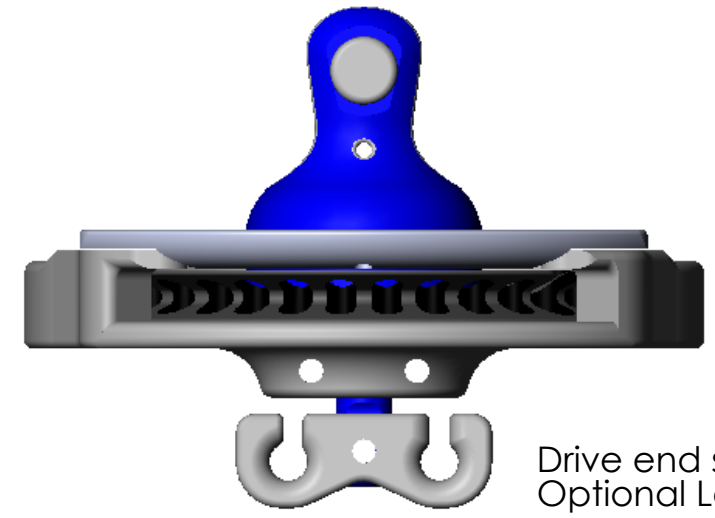
Both Drive end and Optional Swivel  
come standard with Hi Mod D shackle.



Use 9 mm (3/8") diameter Drive line



Drive line feed designed for high line angles.



Drive end shown with  
Optional Loupe Connector.

THE INFORMATION CONTAINED IN THIS  
DRAWING IS THE SOLE PROPERTY OF  
COLLIGO MARINE, LLC.  
ANY REPRODUCTION IN PART OR AS A WHOLE  
WITHOUT THE WRITTEN PERMISSION OF  
COLLIGO MARINE, LLC IS  
PROHIBITED.

DIMENSIONS ARE IN mm TOLERANCES: Decimal +/- 0.05mm .xx +/- 0.025				FINISH:  See Note on Finish		DEBUR AND BREAK SHARP EDGES		DO NOT SCALE DRAWING		REVISION	
								Colligo Marine, LLC			
	NAME		SIGNATURE		DATE				TITLE:  CN3 Furler Asembly		
DRAWN	John Franta				1/24/11						
CHK'D											
APPV'D											
MFG											
Q.A											
							MATERIAL:		DWG NO.		A3
					WEIGHT:		SCALE:1:1		SHEET 1 OF 1		