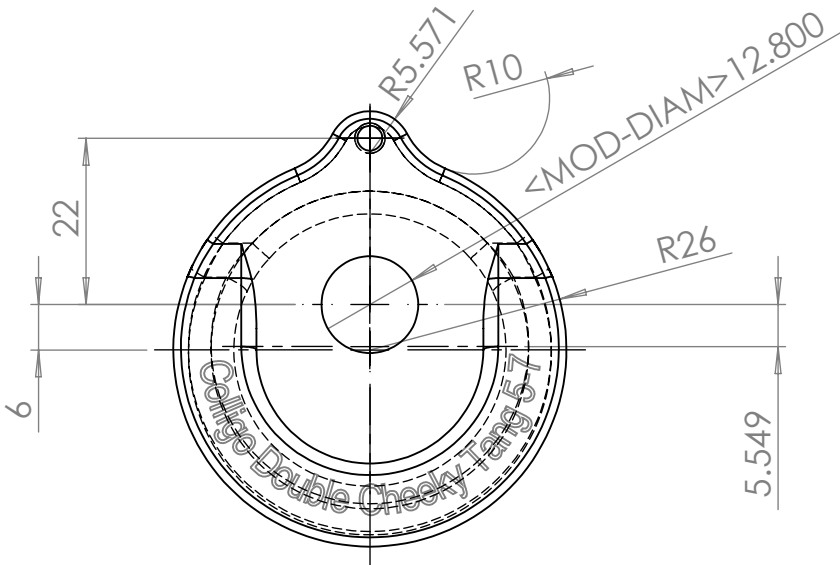
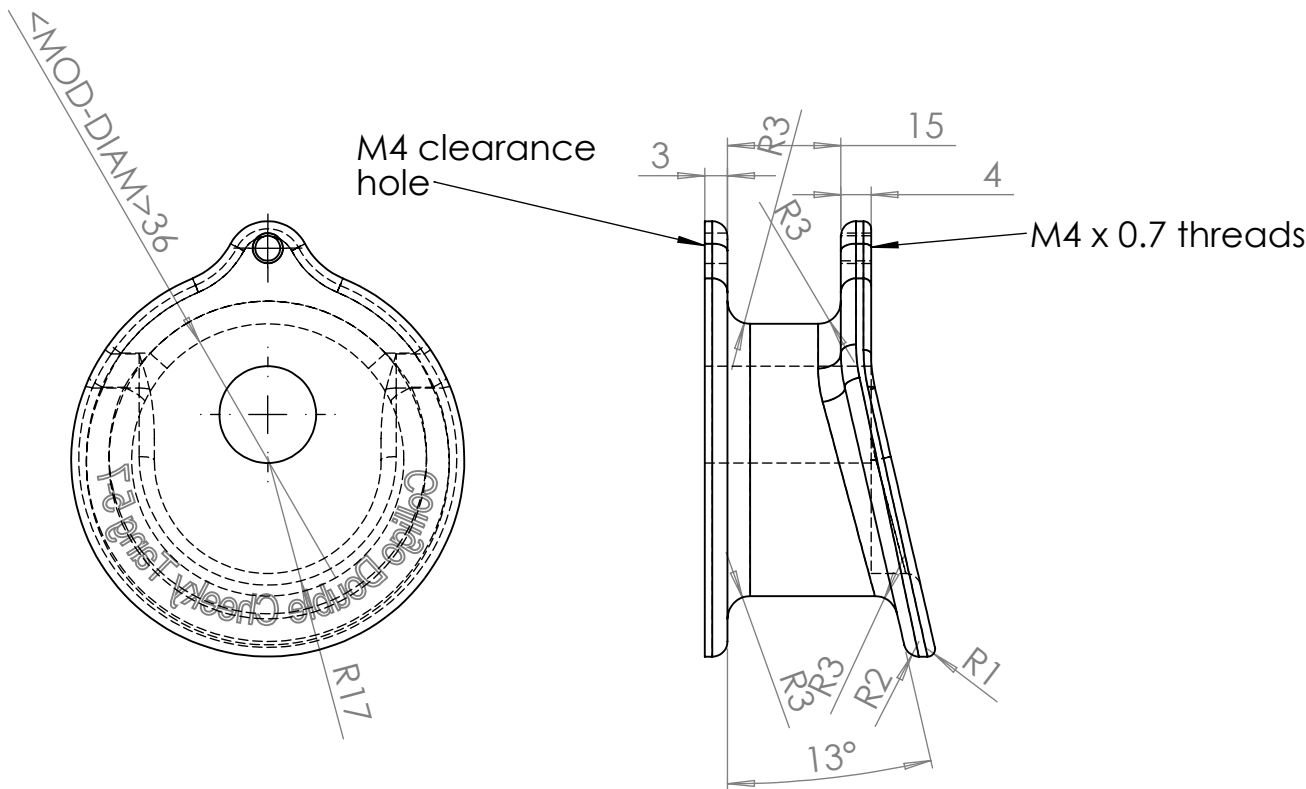


Text to be machined on part  
in location shown, arial font, 2 mm depth.

No sharp edges anywhere.



Finish: Polished,  
Hardcoat Anodized per  
MIL-A-8625 Type III,  
Black

THE INFORMATION CONTAINED IN THIS  
DRAWING IS THE SOLE PROPERTY OF  
COLLIGO MARINE, LLC.  
ANY REPRODUCTION IN PART OR AS A WHOLE  
WITHOUT THE WRITTEN PERMISSION OF  
COLLIGO MARINE, LLC IS  
PROHIBITED.

DIMENSIONS ARE IN mm TOLERANCES: Decimal +/- 0.05mm .xx +/- 0.025		FINISH:  See Note on Finish		DEBUR AND BREAK SHARP EDGES		DO NOT SCALE DRAWING		REVISION	
						Colligo Marine, LLC			
	NAME	SIGNATURE	DATE			TITLE:  ChkyTng5_7dble			
DRAWN	John Franta		1/24/11						
CHK'D									
APP'VD									
MFG									
Q.A				MATERIAL:  Aluminum 6061-T6		DWG NO.		A3	
						chkytng5_7dble			
				WEIGHT:		SCALE:1:1		SHEET 1 OF 1	

	NAME	SIGNATURE	DATE			
DRAWN	John Franta		1/24/11			
CHK'D						
APPV'D						
MFG						
Q.A						
			MATERIAL:			
			Aluminum 6061-T6			
			WEIGHT:			